

GWL/ Power Group Technology Solutions – Stay Powered for the Future

RL709-48V DC Latching Relay 100A



Model name	RL709 - 48V	GWL/Power Latching Relay <ul style="list-style-type: none"> ➤ 120A switching capability (250VAC) ➤ Low coil consumption, ultra-low temperature rise. ➤ Low contact resistance. ➤ Strong anti-shock and anti-vibration capability.
Insulation resistance	1000MΩ	500VDC
Dielectric Strength	Between Coil & Contacts	4000VAC 1min
	Between Open Contacts	1800VAC 1 min
Operate Time	30msec. Max.	
Release Time	30msec. Max.	
Contact Data	Contact form	1A/1B
	Contact material	AgSnO2
	Contact resistance	Max.:1.0 mΩ
	Contact Rating	120A 250VAC
	Max. Switching Power	30000VA
	Mechanical life	5×10 ⁵
	Electrical life	6×10 ³
Coil power	3.6W	Double coil
Coil Data	Rated Voltage	48 V DC
	Pick-up voltage	36 V DC
	Pulse Duration	100 ms
	Coil Resistance	1280 Ω ±10%
Shock resistance	Functional	100m/S ² (10g)
	Destructive	1000m/S ² (100g)
Vibration resistance	10~55Hz 1.5mm	
Humidity	98%RH ,40°C	
Ambient temperature	-40~+70°C	
Termination	Fast connection	
Construction	Dust protected	
Outline size	L * W * T	76.0 x 43.0 x 25.0 mm
Unit weight	0,190 kg	Kilograms (tolerance +/- 1g)

Type marking Information:

① ② ③

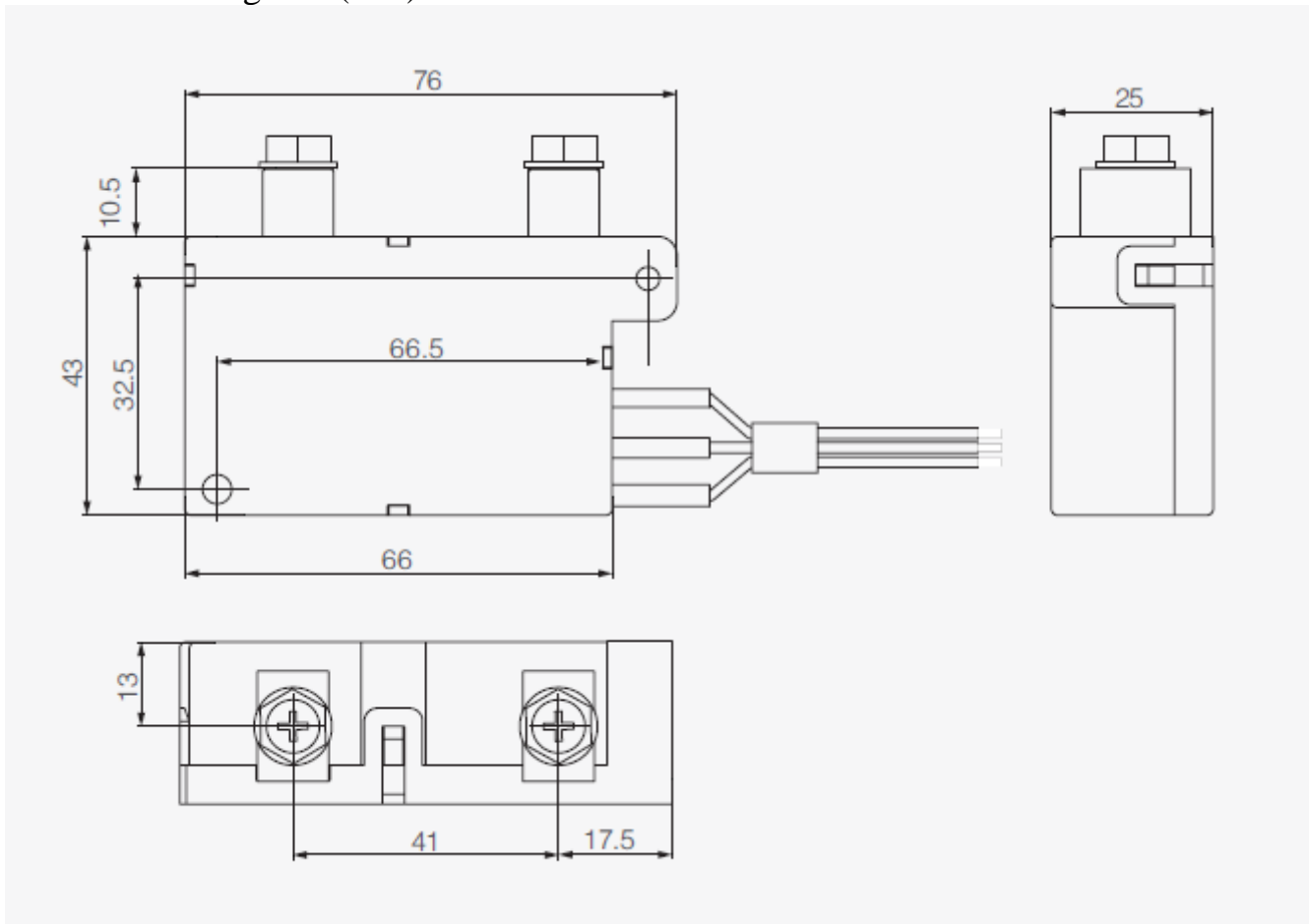
RL 709 - 48 V

① Latching Relay

② Part Number

③ Coil Voltage

Dimensions Diagram (mm)



Circuit Diagram

