

特性Characteristics:

- 仅需脉冲激励，可单、双线圈工作
- only pulse excitation, single, double coil
- 负载能力强，可切换200A/250VAC
- load capacity, can be switched 200 A/250VAC
- 可根据客户要求焊接附件
- Welding accessories according to customer requirements

触点参数 CONTACT DATA

触点形式 Contact form	2A/2B
触点材料 Contact material	AgSnO2
接触电阻 Contact resistance(1A 6VDC) 测试点离外壳5mm处 (Test Point Away From The Casing About 5mm)	Max.: 0.35 mΩ
触点负载 (阻性) Contact Rating	200A 250VAC
最大转换功率 Max. Switching Power	50000VA
最大切换电压 MAX.Switching Voltage	250VAC
机械寿命 Mechanical life	1×10 ⁵
电气寿命 Electrical life	6×10 ³

线圈 COIL

线圈功耗 Coil power	单线圈:12W 双线圈: 24W Single coil:12W Double coil: 24W
--------------------	--

线圈参数 COIL DATA

额定电压VDC Rated Voltage	动作电压VDC Pick-up voltage	脉冲宽度ms Pulse Duration	线圈电阻Ω Coil Resistance
--------------------------	----------------------------	--------------------------	--------------------------

单线圈 Single coil

6	4.5	50	3±10%
9	6.8	50	6.7±10%
12	9	50	12±10%
24	18	50	48±10%

双线圈 Double coil

6	4.5	50	2x1.5±10%
9	6.8	50	2x3.3±10%
12	9	50	2x6±10%
24	18	50	2x24±10%

备注：如需其它额定电压，可特殊定货。

Note: Special ordering for other coil voltage.

性能 CHARACTERISTICS

绝缘电阻 Insulation resistance	1000MΩ (500VDC)	
介质耐压 Dielectric Strength	触点与线圈间 Between Coil & Contacts	4000VAC 1 min.
	断开触点间 Between Open Contacts	2000VAC 1 min
	触点组间耐压POLE&POLE	
动作时间 Operate/ReleaseTime	30msec. Max.	
抗冲击 Shock resistance	稳定性 Functional	98m/S ²
	强度 Destructive	980m/S ²
振动 Vibration resistance	10~55Hz 1.5mm	
湿度 Humidity	5%-85%RH	
温度范围 Ambient temperature	-40~+85℃	
引出端形式 Termination	线圈引出端 Coil	线路板或快速连接 PCB or fast connection
	负载引出端 Load	快速连接 Fast connection
重量 Unit weight	约380g	
封装形式 Construction	带防尘罩 Dust protected	

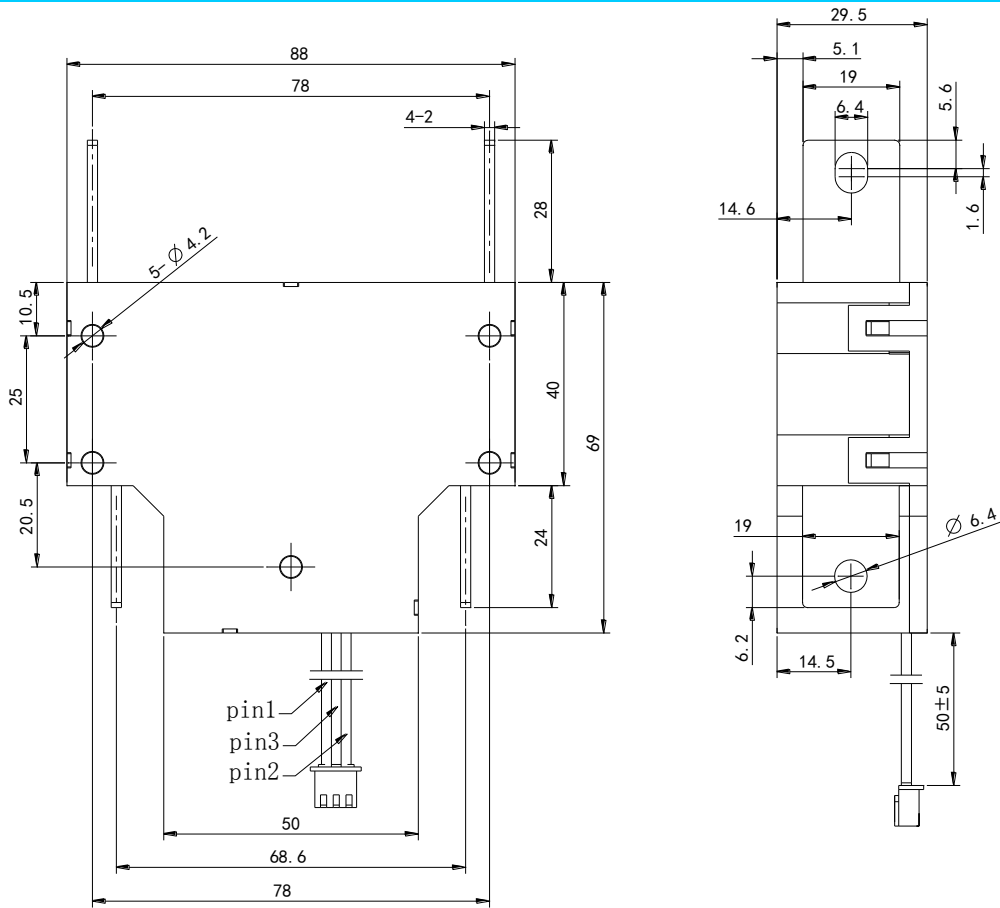
订货标记 ORDERING INFORMATION

NRL 709P - 12 D - 200

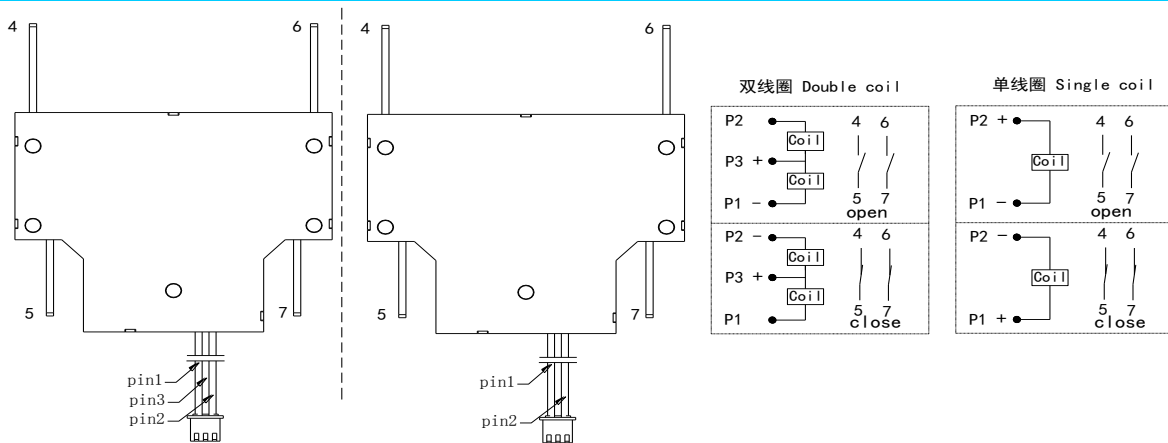
① ② ③ ④ ⑤

①	磁保持继电器代号 Latching Relay
②	产品型号 Part Number
③	线圈电压 Coil Voltage
④	D表示双线圈，S表示单线圈 D= Double Coil; S= Single Coil
⑤	200表示200A 200=200A

尺寸图 DIMENSIONS 单位 Unit: mm



接线图 DIAGRAM CIRCUIT



使用须知:

1、磁保持继电器出厂状态为触点闭合状态（复位状态），但因运输或继电器安装时受到冲击等因素的影响，可能会改变状态，因此在使用前有必要采取措施重新使其复位。

Default status of contacts is close(reset). But due to the collision during transportation or assembly, contacts status could be changed. So it's necessary to reset the contacts status before using.

2. 为了确保磁保持继电器可靠动作，施加到线圈上的激励电压须达到额定值，且脉冲宽度须达到动作时间的3倍以上。对于双线圈继电器，不要同时向两个线圈施加电压信号，也不要长时间（大于1分钟）向线圈施加电压，以防线圈过热损坏。

To ensure latching relay operate reliably, the energizing coil voltage must be reached rated value, and pulse duration must exceed 3 times of operate time. For two coil version, don't apply voltage to both coils and lasting long time (>1min.), to avoid coil heating and damaged.