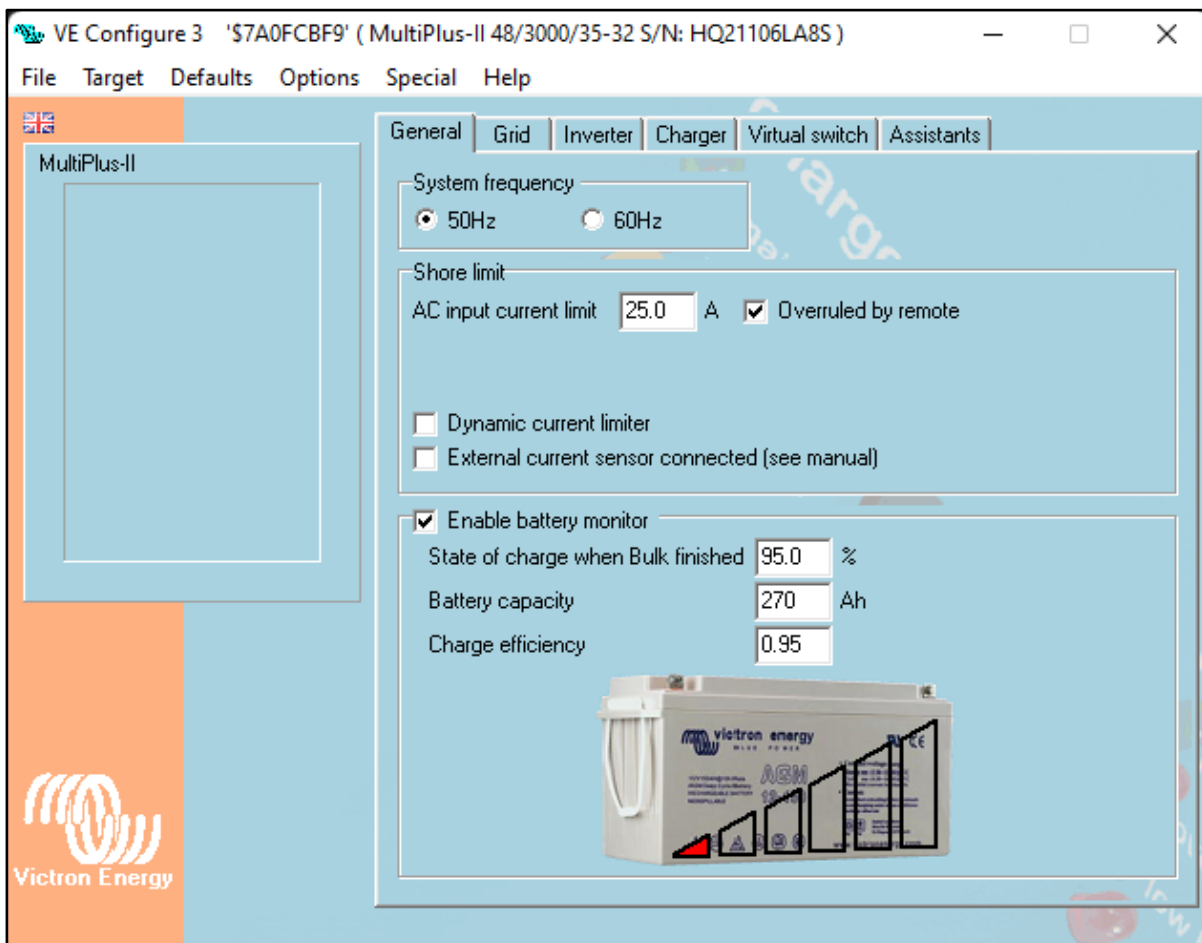


# ELERIX EX-S5

SUPPORT INFORMATION FOR VICTRON INVERTERS

## SETTINGS OF VICTRON MULTIPLUS II WITH ELERIX EX-S5

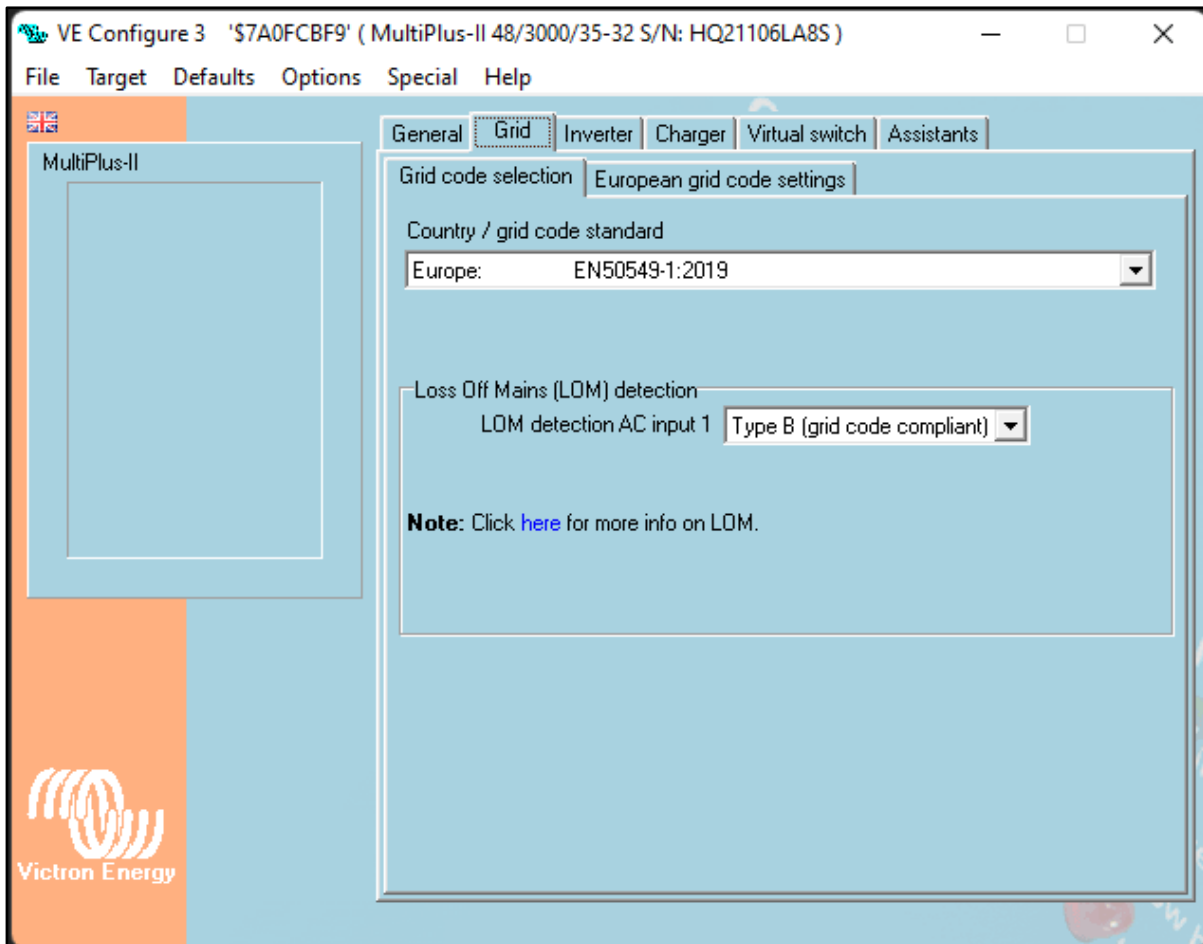


### VE CONFIGURE

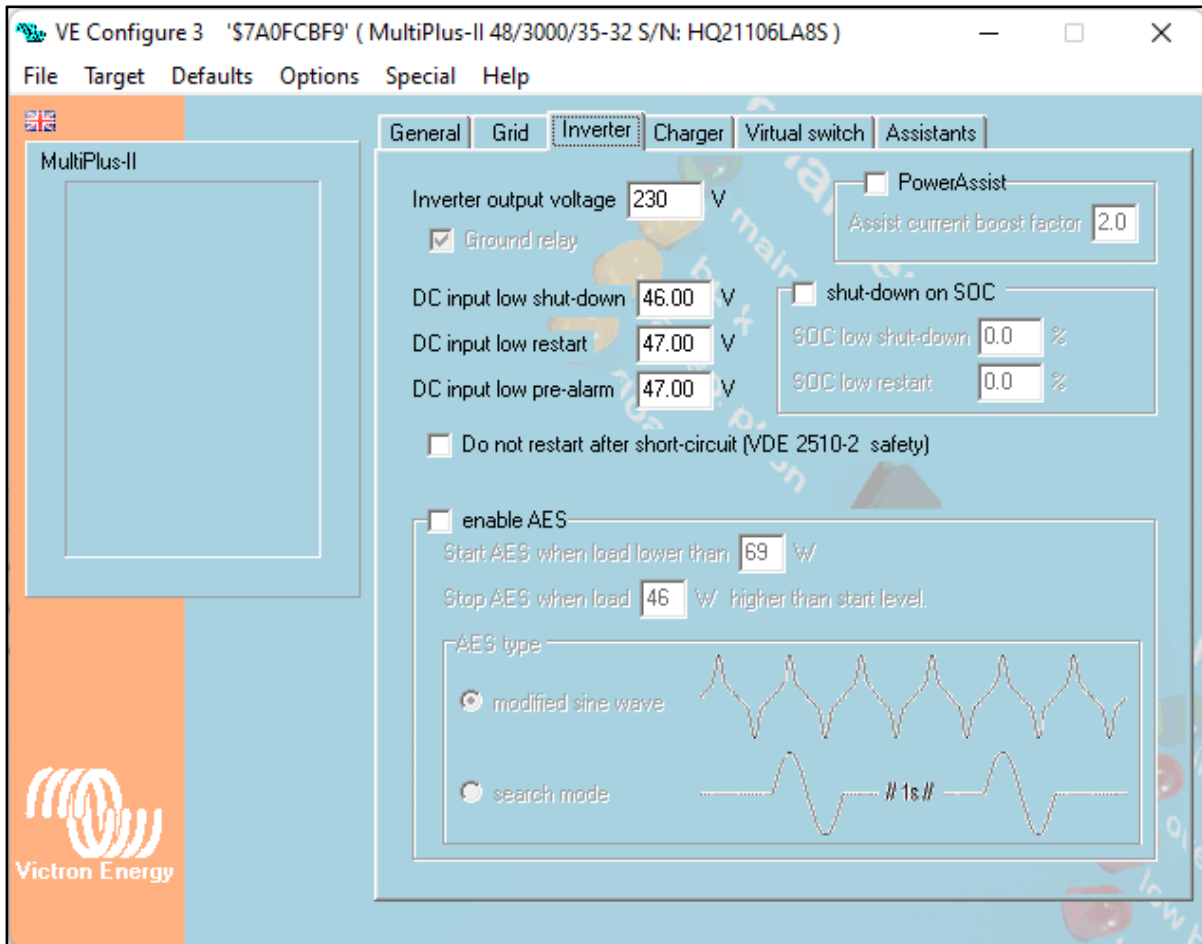
### GENERAL

**Shore limit** - Set value of main circuit breaker

**Enable battery monitor** – this setting will be automatically adjusted by the ESS Assistant – no need to make a manual setting – just skip the setting



VE CONFIGURE	GRID
	<b>Grid Code Selection</b> - Set the EUROPEAN value code standard  Ignore the rest

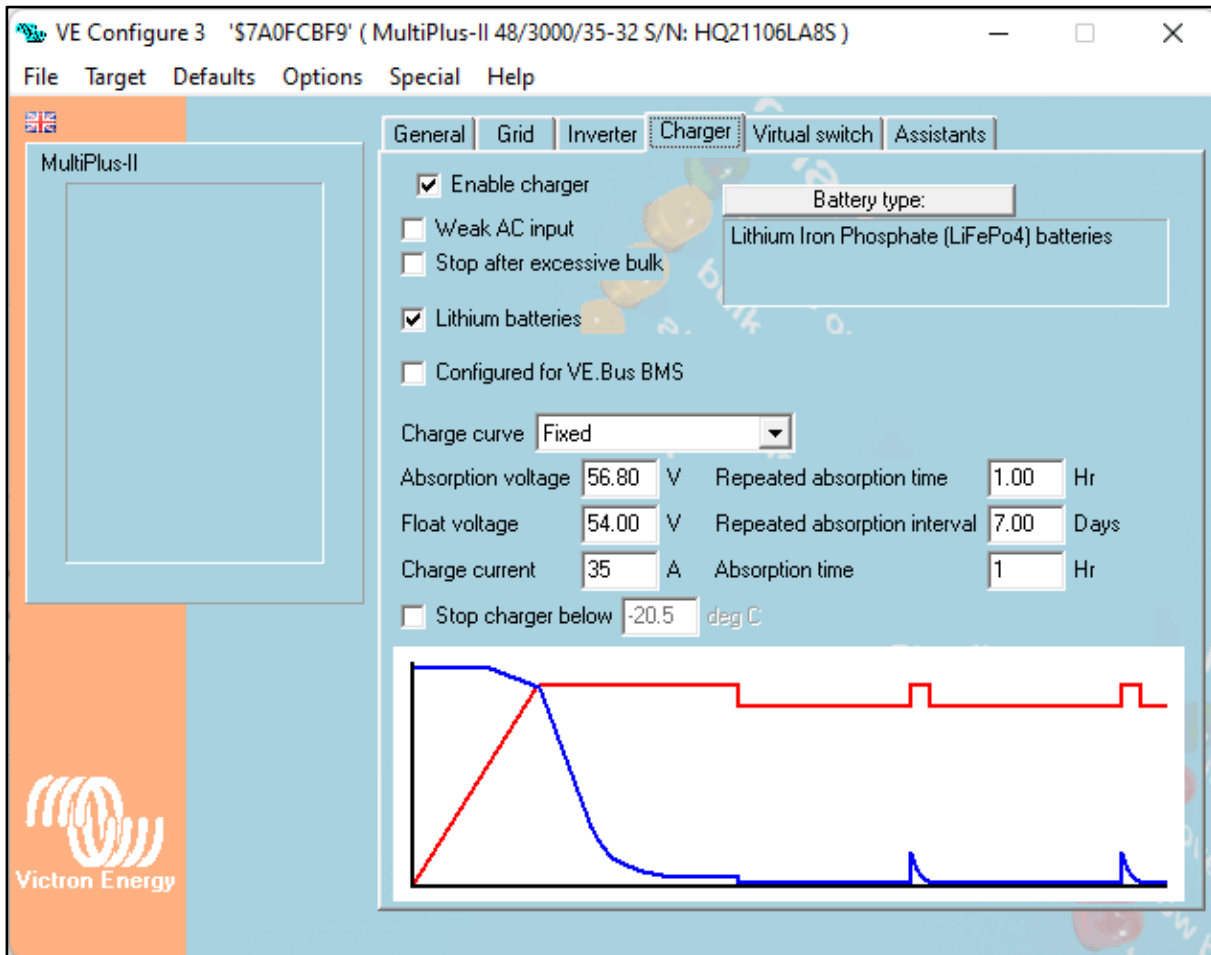


<b>VE CONFIGURE</b>	<b>INVERTER</b>
---------------------	-----------------

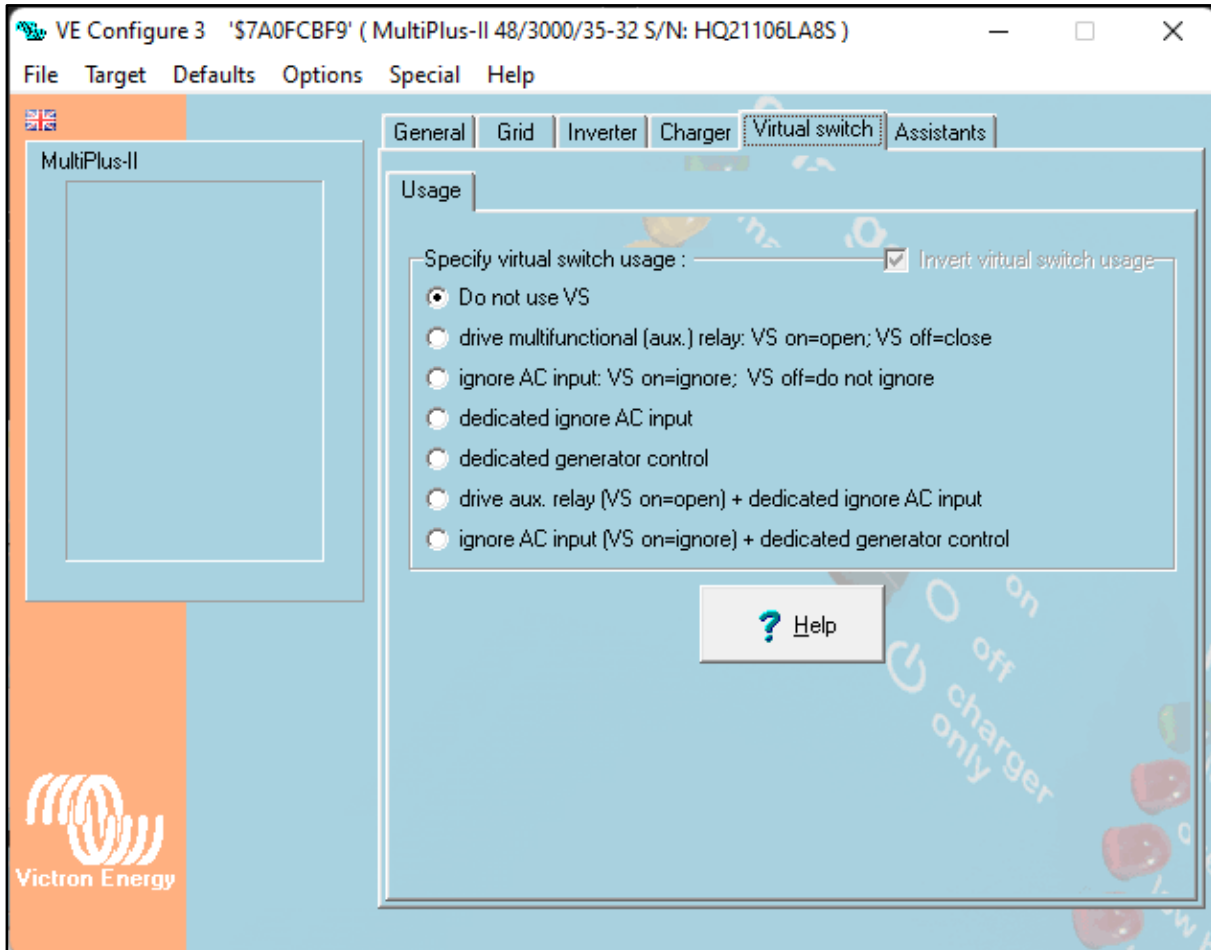
**Set values**

**DC input low shut-down** -- 46 V  
**DC input low restart** -- 47 V  
**DC input low pre-alarm** -- 47 V

Ignore the rest



VE CONFIGURE	CHARGER
	Set
	Enable Charger
	Lithium Batteries
	Battery type:
	Lithium Iron Phosphate (LiFePO4) batteries
	Ignore the rest



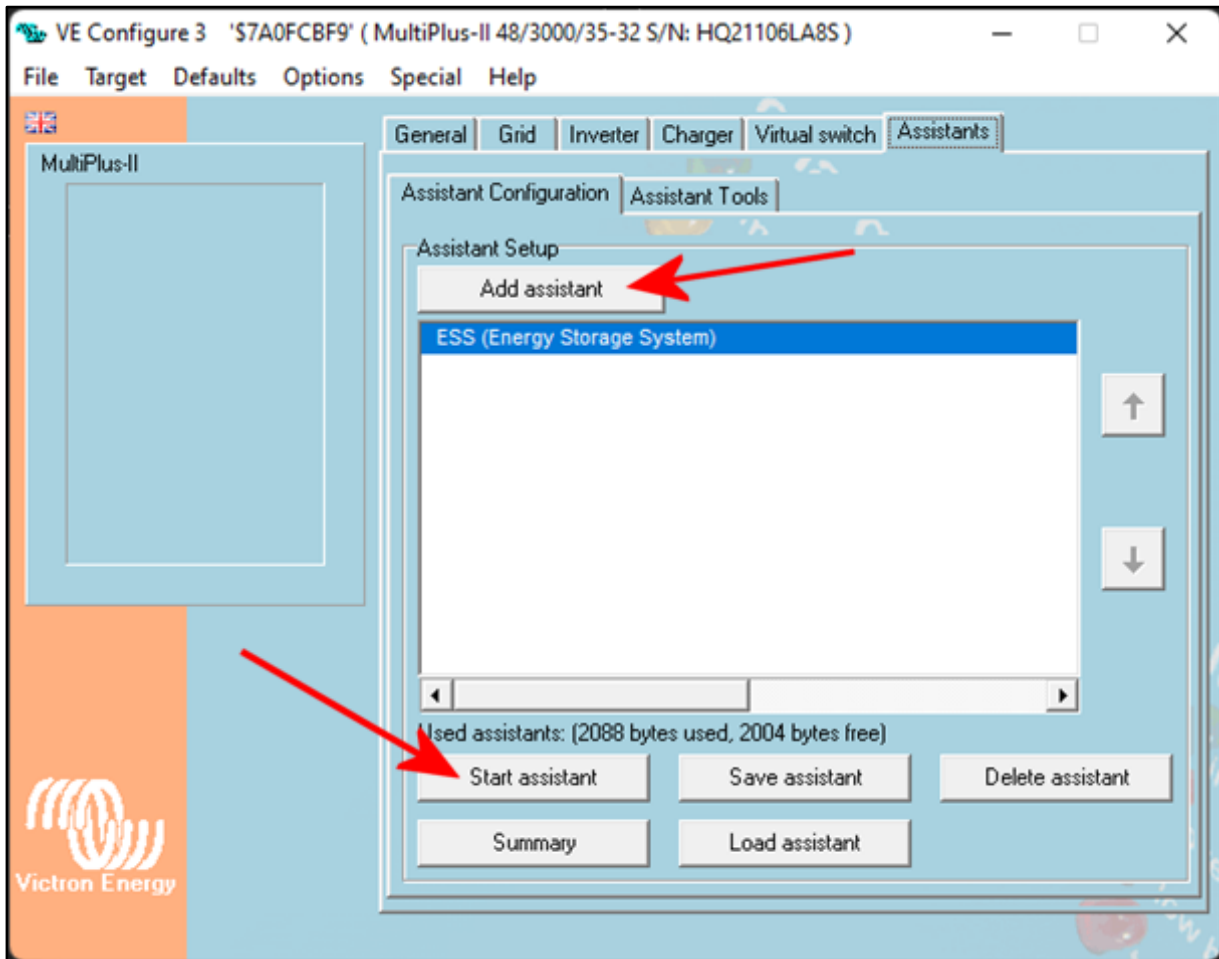
**VE CONFIGURE**

**VIRTUAL SWITCH**

**Set**

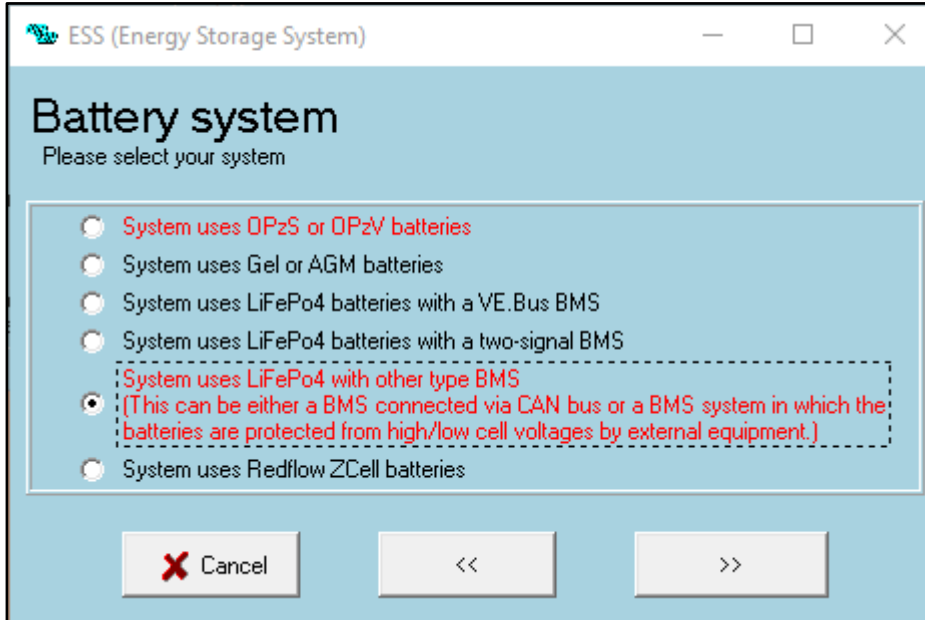
**Do not use VS**

---

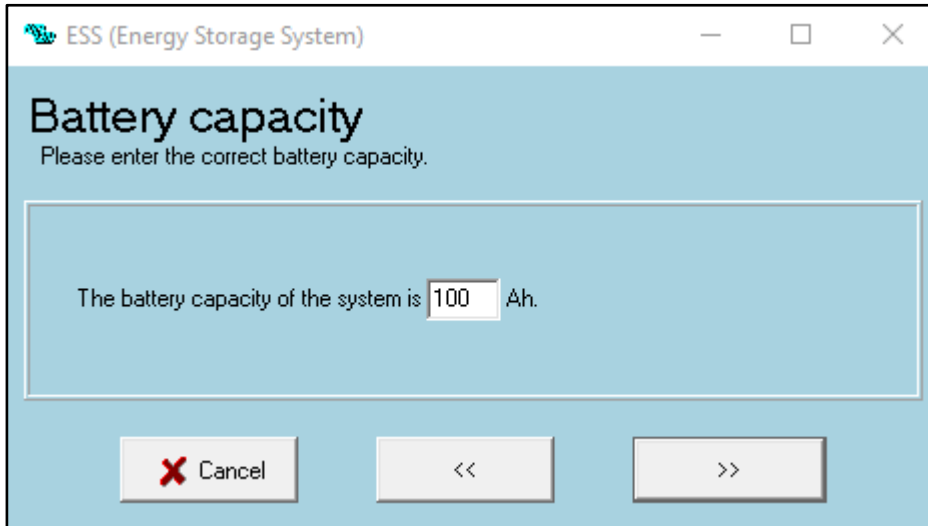


VE CONFIGURE	ASSISTANTS
	Assistant Setup
	Select Add assistant
	Add "ESS (Energy Storage System)"
	----> Start assistant

---



VE CONFIGURE / ASSISTANTS	ESS (Battery Storage System)
	<b>Battery system</b>
	<b>Select</b>
	<b>System uses LiFePo4 with other type BMS</b>
	<b>Press &gt;&gt;</b>



#### VE CONFIGURE / ASSISTANTS

#### ESS (Battery Storage System)

##### Battery capacity

##### Set the battery capacity

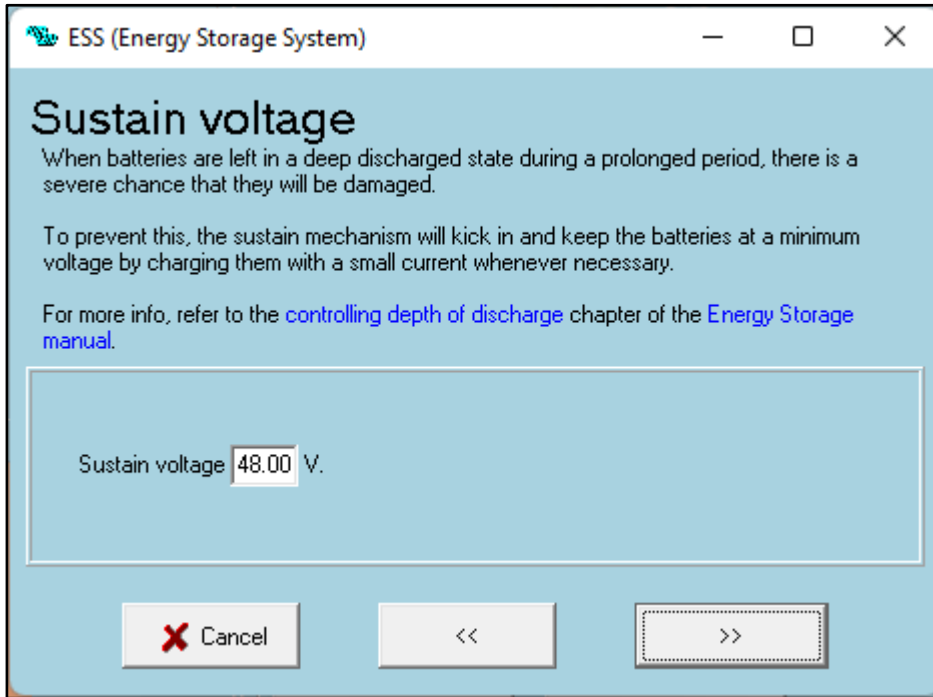
**One EX-S5 is 100 Ah**

**If you have more EX-S5 in parallel, enter the higher value**

*(e.g. for 5 x EX-S5 in parallel you will enter 500Ah)*

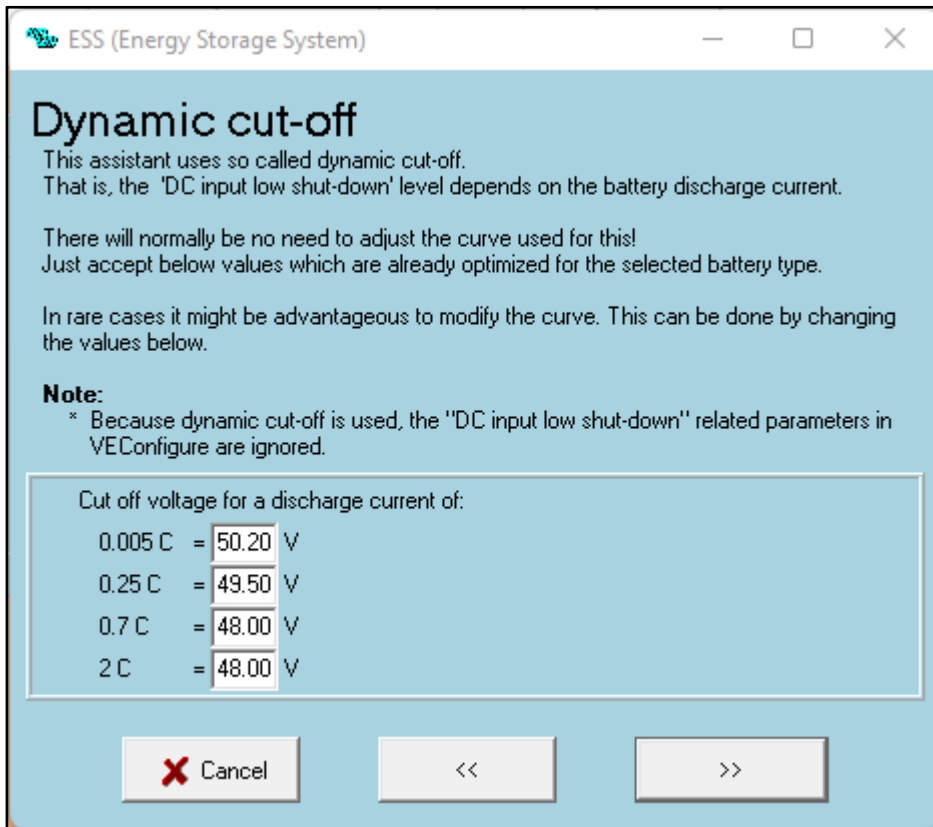
**Press >>**





VE CONFIGURE / ASSISTANTS	ESS (Battery Storage System)
	Sustain voltage
	Set the Sustain voltage
	48.00V
	Press >>

---



VE CONFIGURE / ASSISTANTS	ESS (Battery Storage System)
	<b>Dynamic cut-off</b>
	<b>Recommended settings for DOD 80%:</b>
	<b>0.005C = 50.20V</b>
	<b>0.25C = 49.50V</b>
	<b>0.7C = 48.00V</b>
	<b>2C = 48.00V</b>
	<b>Press &gt;&gt;</b>

**Indicative LiFePO4 battery voltage table in relation to state of charge (%SOC)**

<b>Voltage</b>	<b>Capacity % SOC (State of charge)</b>
58.4 V	100% charging
54.4 V	100% resting
53.6 V	98%
53.2 V	90%
52.8 V	70%
52.4 V	40%
52.0 V	30%
51.6 V	20%
51.2 V	17%
50.0 V	14%
48.0 V	9%
44.0 V	0%

(at 20°C to 25 °C)

== END OF FILE ==

**MANUFACTURER**  
ELERIX LTD  
Enterprise House 2 Pass Street,  
Oldham, Manchester,  
United Kingdom, OL9 6HZ  
[www.elerix.com](http://www.elerix.com)

**EU Representative:**  
GIWAL LTD, o.z.  
Sterboholska 1404/104,  
102 00 Praha 10  
Czech Republic, EU  
[www.giwal.com](http://www.giwal.com)